

What is an EAL intervention?



7th June 2018

Avril Bull

Aims

- What is an intervention?
- When and how to use intervention appropriately?
- Awareness of types of interventions
- Developing an understanding of the Graduated Approach for EAL pupils

What is intervention?

The action or process of intervening.



In the classroom



Withdrawal outside
the classroom

To use intervention or not to use intervention...

An appropriate balance of whole class and intervention supports EAL learners



To use intervention or not to use intervention...

“Just because pupils are not saying much or writing much it doesn’t mean they’re not learning”

Graham Smith 2014



To use intervention or not to use intervention...

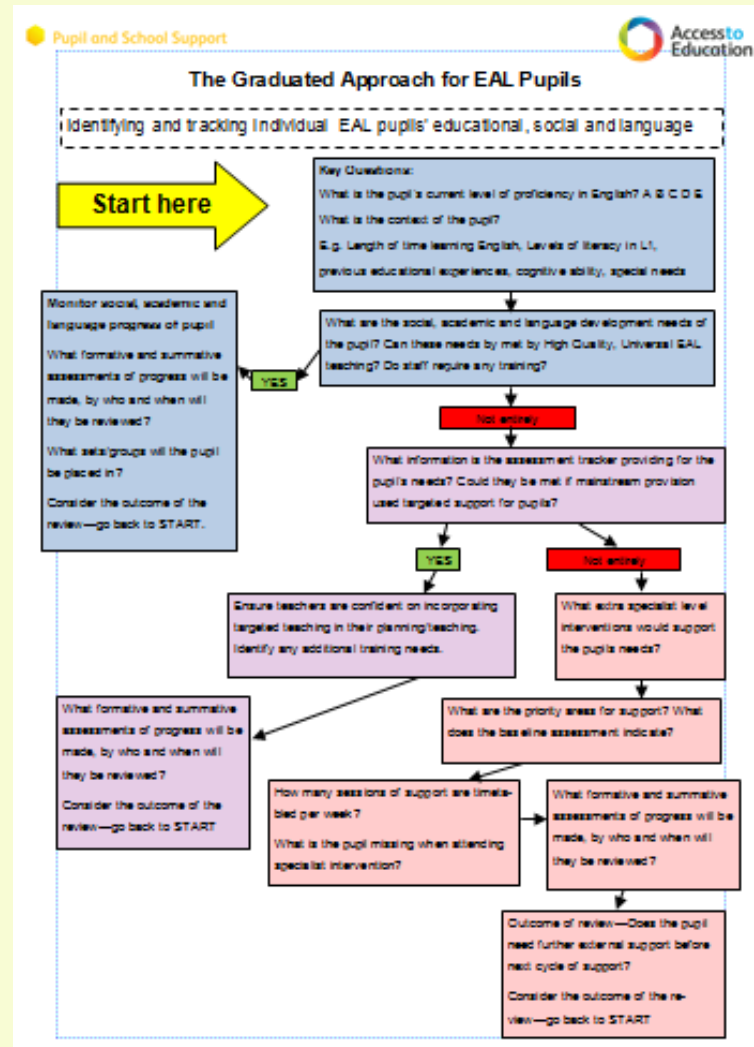
- Withdrawal intervention is not solely the answer to EAL pupils learning the English language.



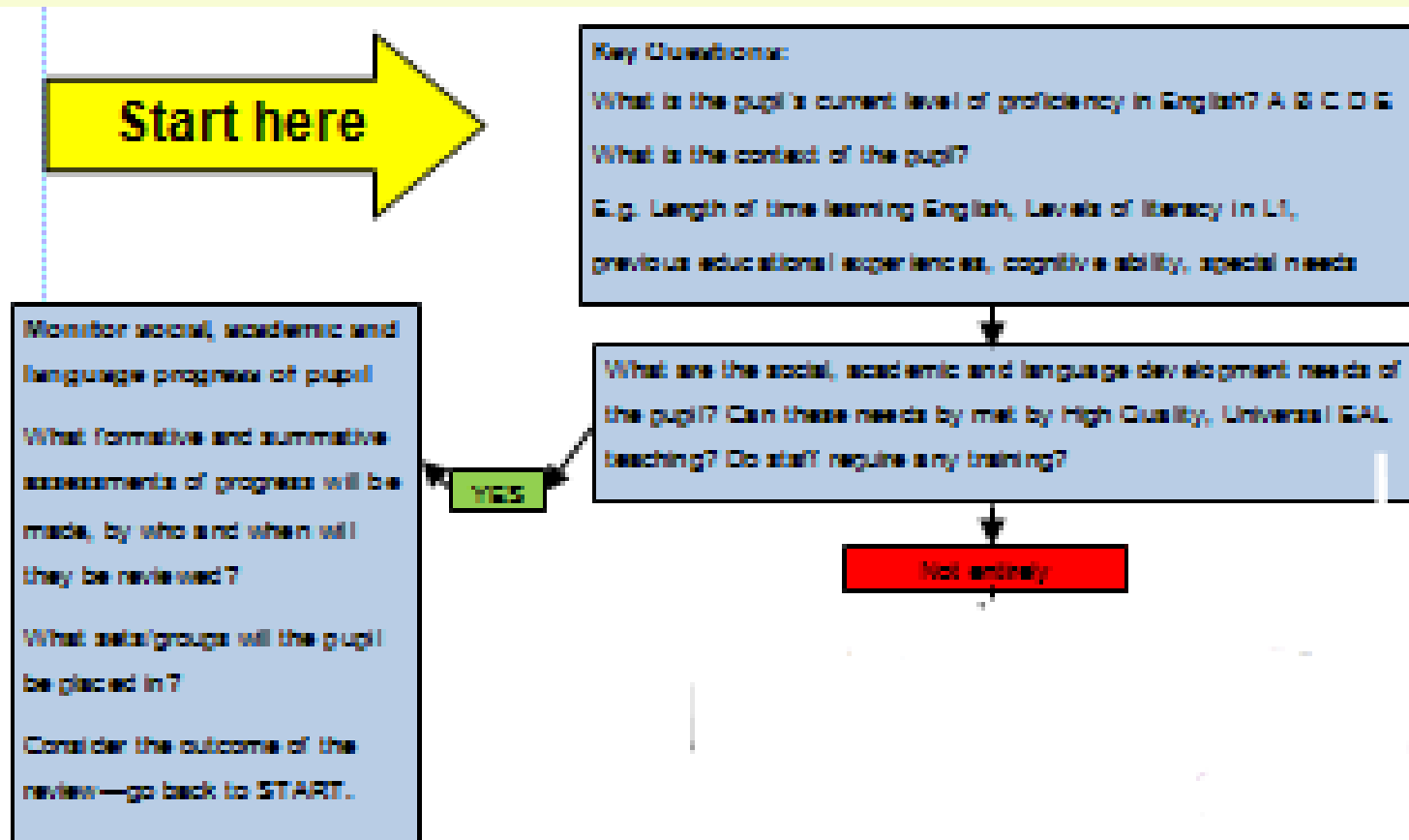
- When used, needs to be timely and planned carefully.



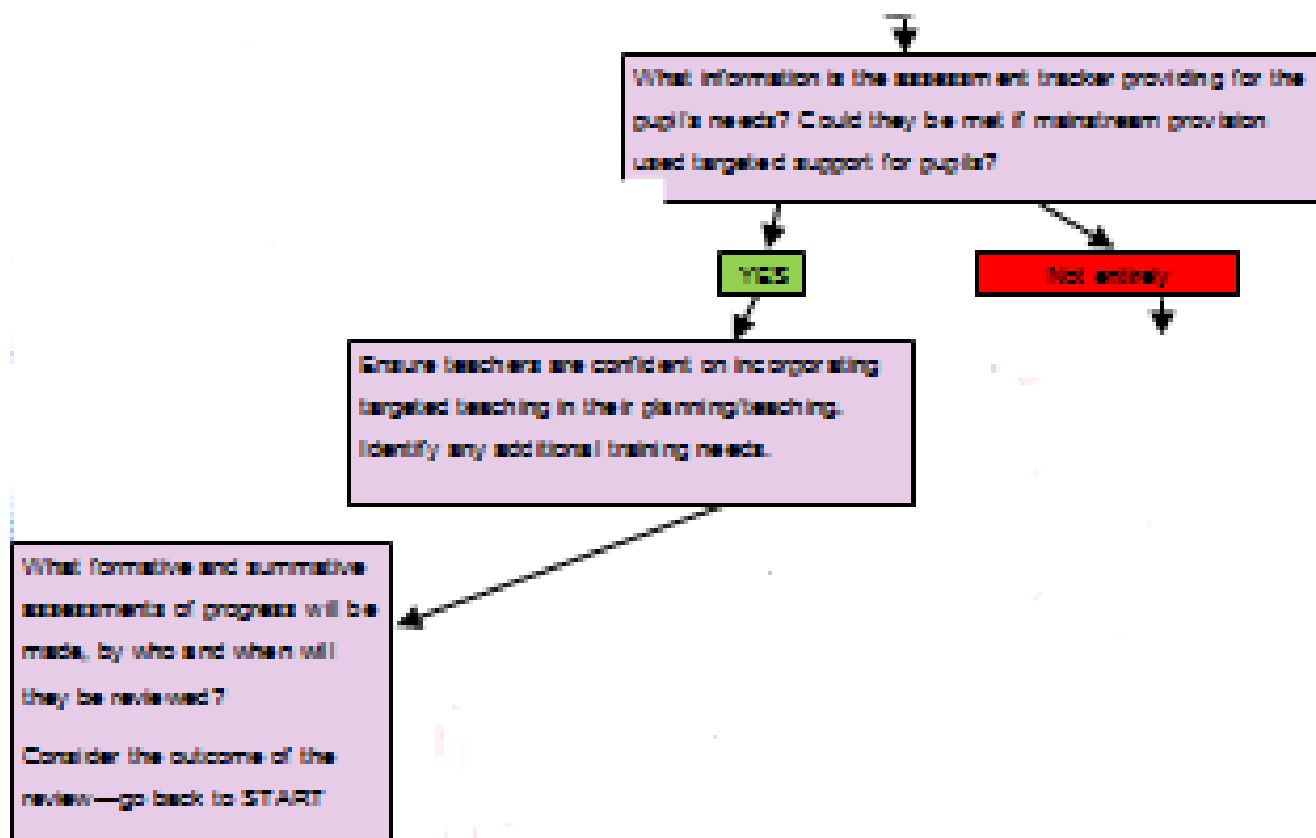
Graduated Approach for EAL Pupils



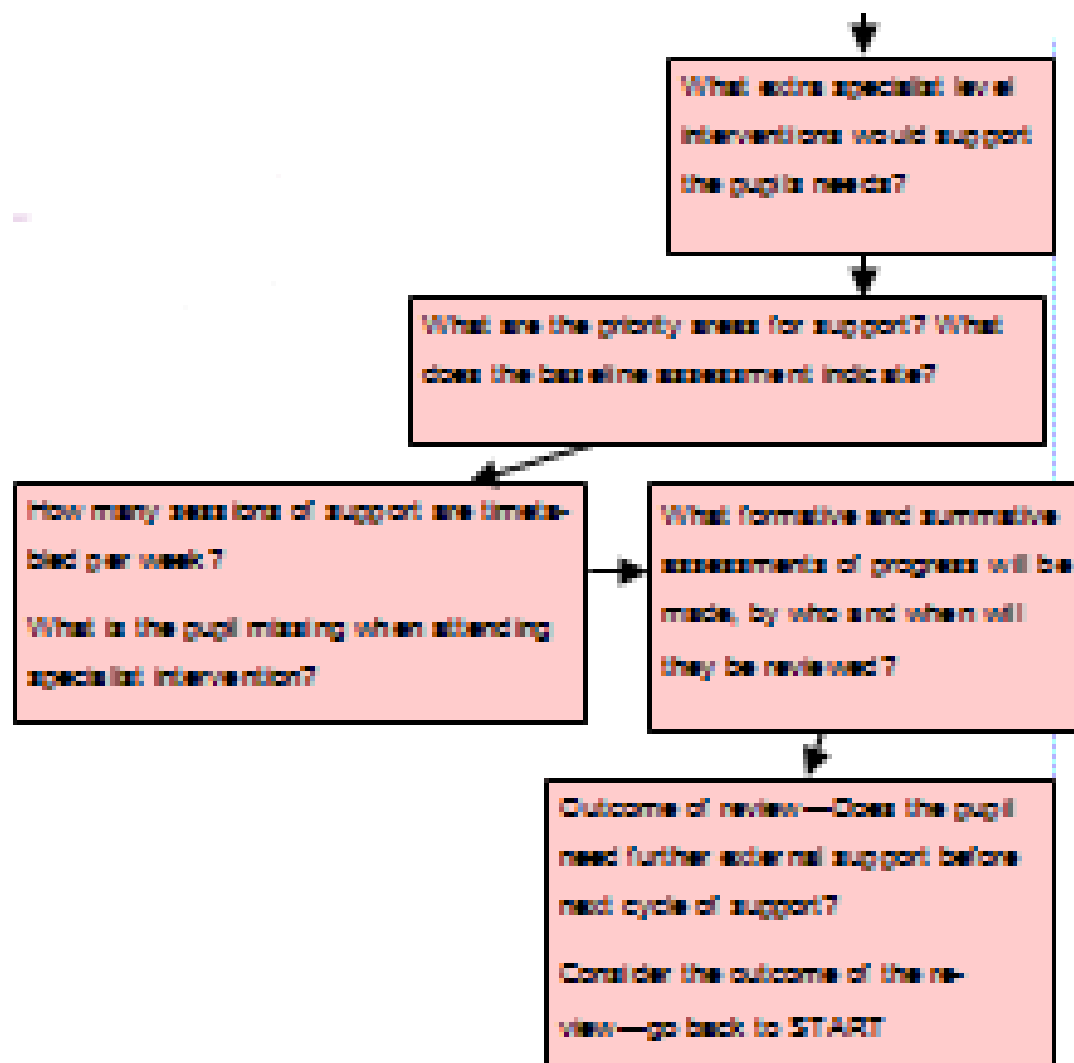
Universal



Targeted Support



Specialist Support



Activity

Universal



Targeted



Specialist



Intervention linked to need

- Base it on assessment/observation
- Gather baseline data
- Could be linked to personal interests or needs
- Will change as the needs of the pupil progresses



Types



The diagram consists of four colored ovals arranged in a diamond shape on a light yellow background. Each oval contains a label. The top oval is blue and labeled 'Technology'. The left oval is red and labeled 'Publications'. The right oval is green and labeled 'Pre-tutoring'. The bottom oval is yellow and labeled 'Personalised'.

Technology

Publications

Pre-tutoring

Personalised

Technology

Across the curriculum

Talking pens

Talking tins

Google translate

Story bird

Clicker

Clicker7



ICT specific programmes

Learning Village

Flash Academy



Publications



Black sheep



Rosetta Stone

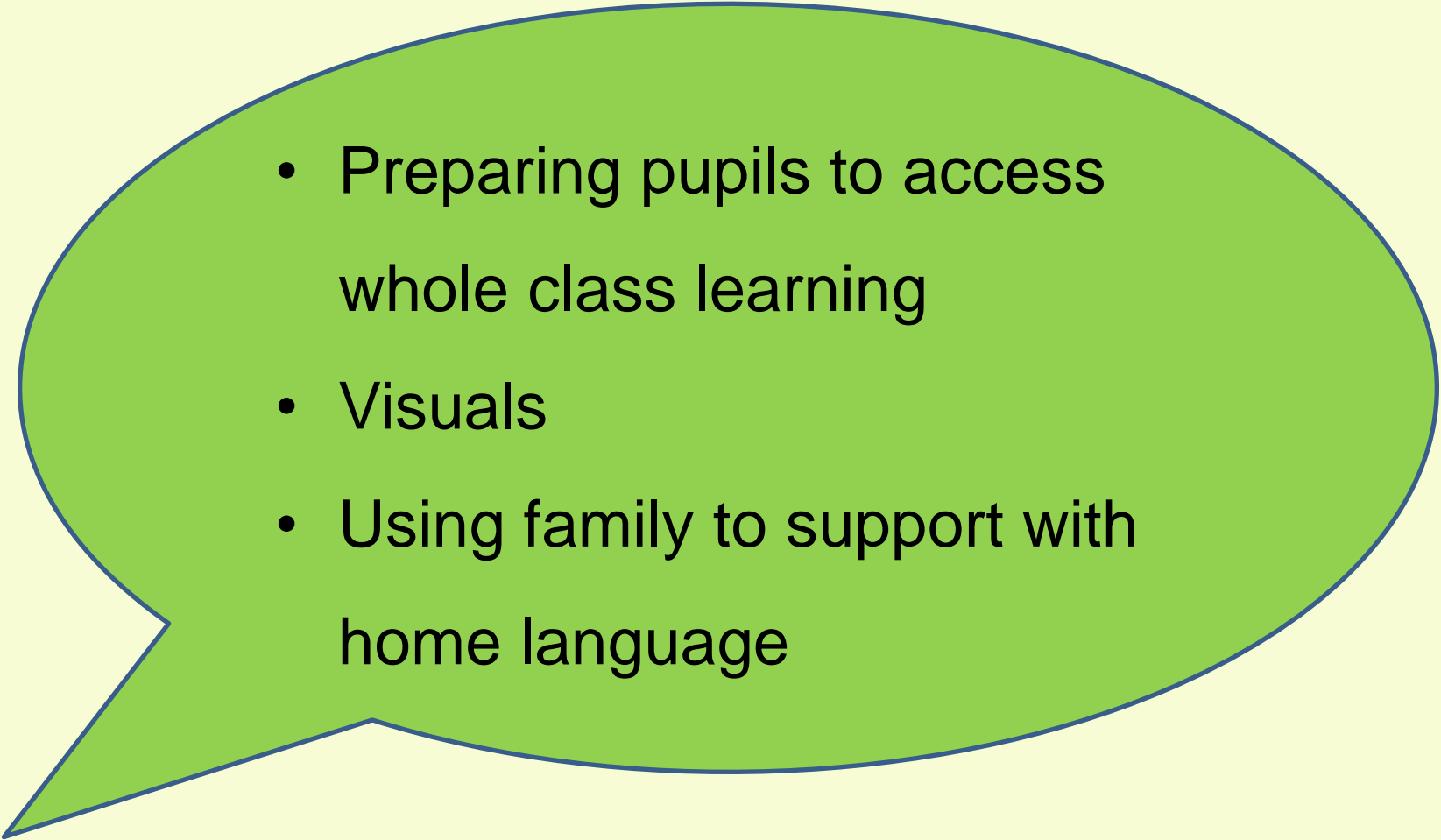
Little Bridge

EAL Nexus

Birmingham Toolkit - interventions



Pre-tutoring

- 
- Preparing pupils to access whole class learning
 - Visuals
 - Using family to support with home language

Multi Modal Learning

- Type of learner - VAK
- Fun
- Repetitive
- Approaches can include

rote/memorisation, but they need to then be applied



Benefits of withdrawal intervention

- Impact on confidence
- Safe place to make mistakes
- Practice
- Prepare and attend to misconceptions



Thank you for listening!



Any questions?



avril.bull@birmingham.gov.uk