



An introduction to Pupil and School Support for parents & carers



School

Date

PSS Teacher

What is a Pupil and School Support Teacher?

- We are qualified teachers who support children and young people in educational settings who have cognition and learning difficulties.



How does PSS become involved with your child?

- Schools will ask their PSS teacher to become involved if they have concerns about your child's learning and progress.
- This should be after they have already given some additional support and tried different things in the classrooms.
- The decision to involve PSS should be discussed and agreed with you as parents/carers ~ your written consent will be gained first.

What do we do?

All PSS involvement is personal to the child/young person and will take place after discussion with the school about their concerns.

- The PSS teacher may:
 - Work outside the classroom with your child to assess their skills,
 - See how your child works in the class,
 - Talk about your child's learning need with staff,
 - Talk to your child about how they feel about their learning.



Assessments

The PSS teacher may assess a pupil's ability in any of the following areas:

- Speech and Language
- Reading
- Spelling
- Writing
- Memory & Processing
- Mathematics



What Next?

After seeing your child the PSS teacher will:

- Share ideas about what to try next
- Work with staff on how to help your child

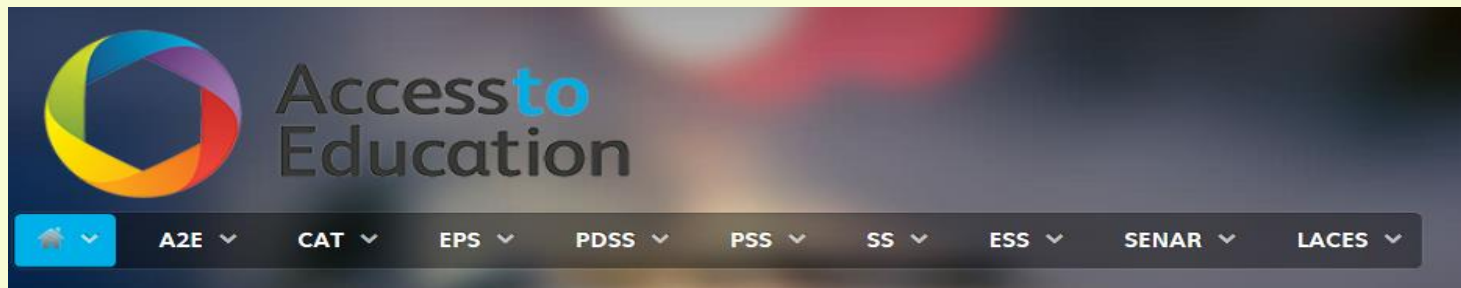
We may also:

- Provide a written report for the school
- Meet you in school to discuss the work carried out
- Suggest other outside agencies who could also help your child
- Work with the school in monitoring you child's progress and setting targets.
- See your child more than once to assess the progress that has been made over 6 months or a year.

Further Information

- You can arrange to see or speak to us through the Special Educational Needs Coordinator (SENCO)
- For further information about Access to Education Services, please visit our website:

<http://accesstoeducation.birmingham.gov.uk>

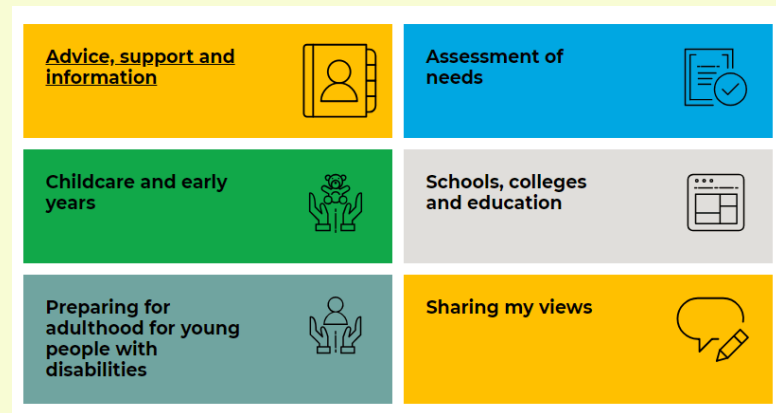


Further Information

Want to know more about support for SEN?

Please visit:

<https://www.birmingham.gov.uk/localoffer>



Birmingham City Council SEND & Inclusion Strategy 2017-2020:

https://www.birmingham.gov.uk/info/50034/birminghams_local_offer_send/1575/strategy_for_send_and_inclusion

Any questions?

Pupil and School Support



Name

Pupil and School Support Teacher